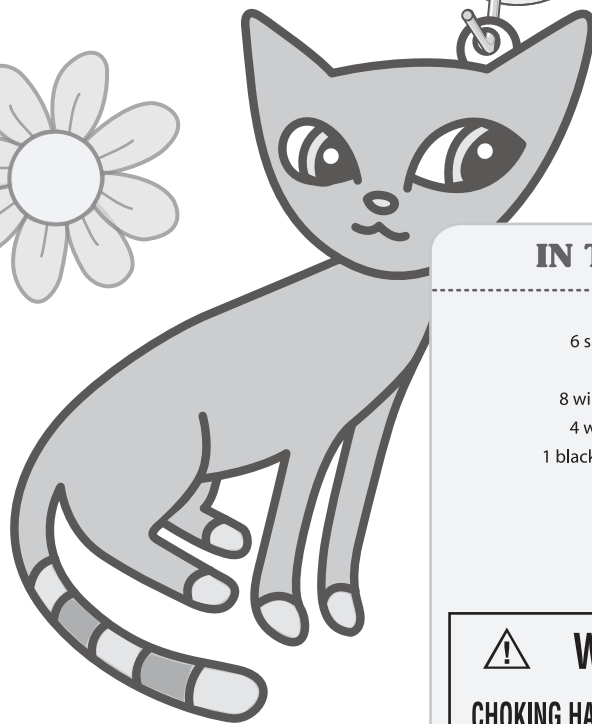
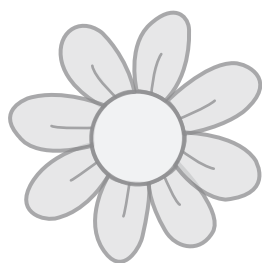


Sun Catchers

Turn sunlight into art!

Watch these sun catchers glow from your window! With several colors to choose from you can paint your sun catchers any color you like and make them your own!

★ Check the back for tips on how to make your sun catchers more beautiful.



IN THIS KIT

- 7 sun catchers
- 6 suction cup hangers
- 7 window paints
- 8 window cling designs
- 4 window cling sheets
- 1 black dimensional paint
- silver glitter
- 1 gold cord
- 1 paintbrush
- instruction sheet



WARNING:

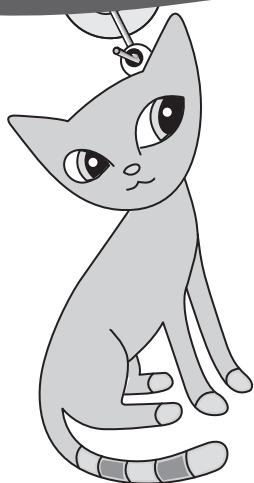
**CHOKING HAZARD - Small parts.
Not for children under 3 years.**



© 2007 Peachtree Playthings, Atlanta GA 31139

Made in China

Sun Catcher



FOR THIS PROJECT YOU WILL NEED:

sun catcher of your choice
paints of your choice
paintbrush
suction cup or cord

ABOUT WINDOW PAINTS

The window paints in your kit will look thick when wet but will dry clear.

1 Choose a sun catcher and the paints you wish to use. Plan how you want to paint your sun catcher before starting.

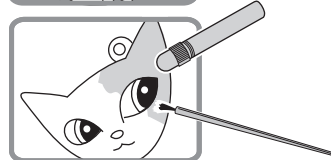
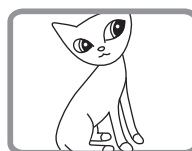
2 Squeeze a small amount of paint from the paint tube into the section you want to color then use your paintbrush to spread the paint evenly. Let dry.

3 After the paint has dried, hang the sun catcher with either the hanging suction cup or gold cord and hang in front of a window where lots of sunlight shines through.

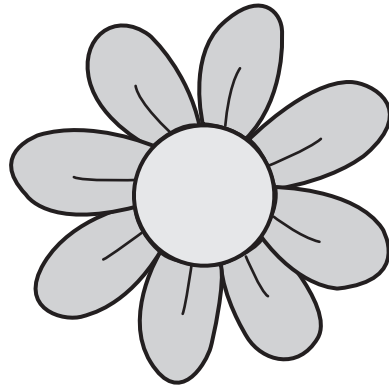
Now you have your own Sun Catcher!

DESIGN TIPS

- Sprinkle dry glitter in wet paint to add extra sparkle!
- Use the black dimensional paint for additional lines and paint areas. Be sure to let the dimensional paint dry completely before painting!



Window Cling



FOR THIS PROJECT YOU WILL NEED:

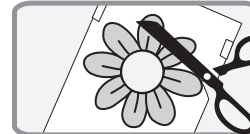
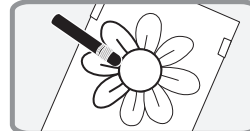
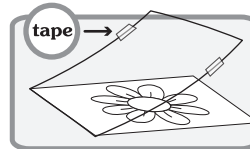
pattern sheet
clear window cling sheet
black dimensional paint
paints of your choice
tape (not included)

1 Choose which pattern you'd like to make. Lay the vinyl sheet over the pattern sheet and tape both sheets together so they won't slide around as you work.

2 Next, use the black paint to outline your design. Make sure to close all the lines so that there are no leaks when you add your paint. Let dry for three hours.

3 After the black outline paint has dried add paint to each section. Use the paintbrush to spread the paint evenly. Let dry.

4 Once the window cling has completely dried, cut out from the plastic sheet. You can then stick it to most plastic, metal and glass surfaces.



Now you have your own Window Cling!

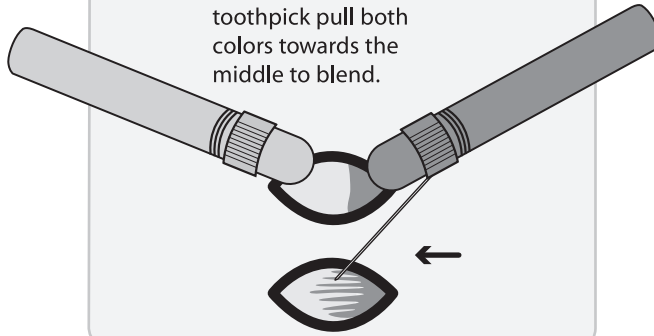
★ DESIGN TIP

- Use a fine tip marker to add detail or designs to your pattern before painting.

EXTRA tips!

BLENDING colors

You can create amazing effects by blending two or more colors. With a toothpick pull both colors towards the middle to blend.



MARBLING colors

Fill a space with two or more colors. Use a toothpick to swirl the colors and create a marble look.

